

Asset #10059

Building Details:

State Seal: Florida
Occupancy: Business
Type of Construction: VI
Wind Speed: 130 mph
Code in Effect at time of manufacture: 2004 FBC

Exterior Details:

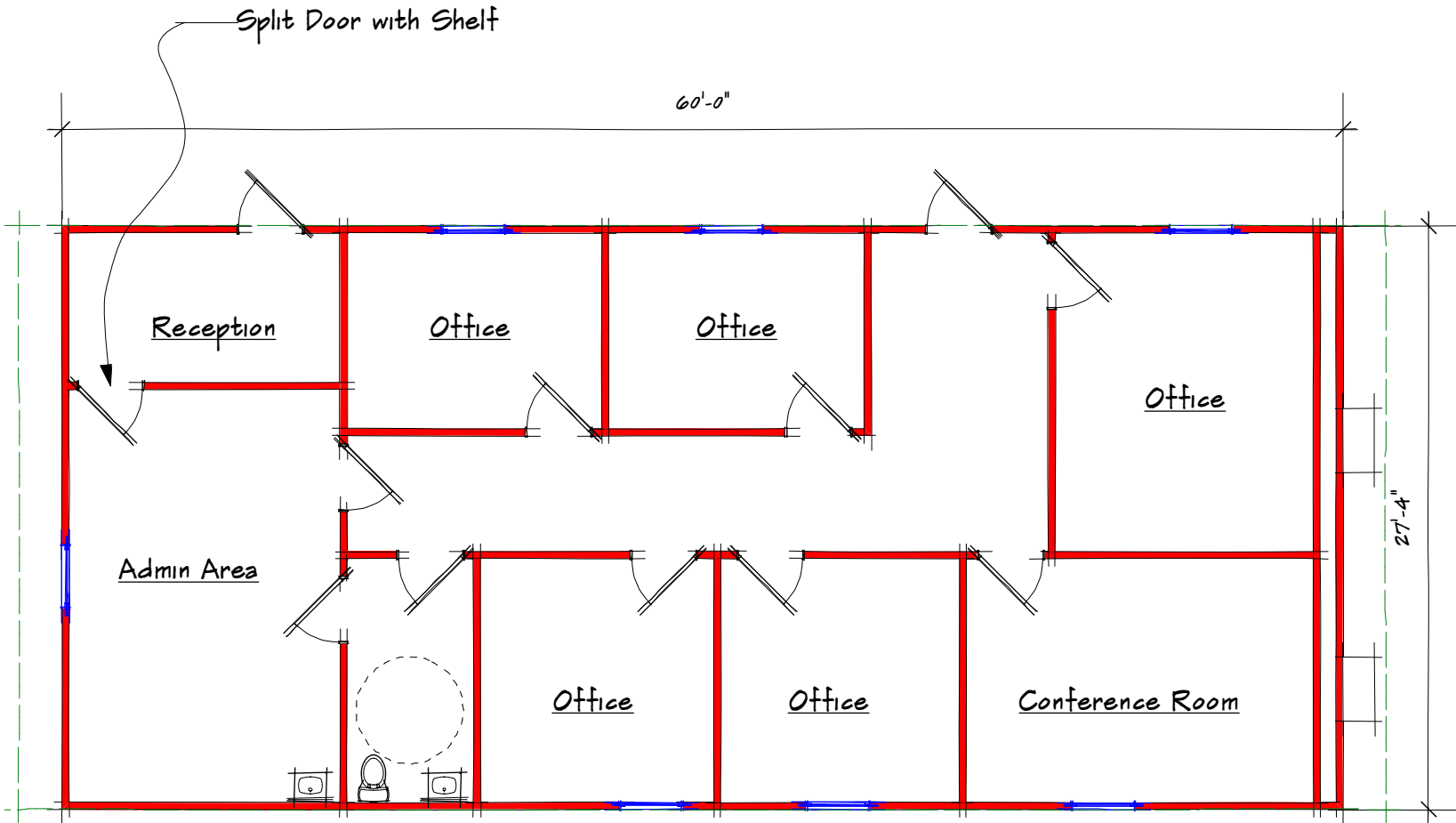
Siding: Hardie Panel (Stucco Relief)
Roofing Material: .045EPDM
Frame: Outrigger
Doors: Stl / Stl (2)
Windows: 36" x 54" V/S
HVAC: Wall Hung 3 Ton 10 KW
Parapet: Vertical with overhangs at endwalls

Interior Details:

Wall Finish: Vinyl Clad Gypsum
Floor Finish: Vinyl Composition Floor Tile
Molding: Vinyl Cove Base
Doors: Solid Core
Ceiling: T-grid suspended
Floor Decking: Single 5/8"



Asset #10059



Floor Plan

Modular Classroom Building

Florida DCA Approved

Copyright 2013: The information contained herein is proprietary and is the exclusive property of Affordable Structures Incorporated. Any reproduction or distribution is strictly prohibited without the express written consent of Affordable Structures Incorporated.

27'-4" x 60'-0"
FBC Coded

Scale: graphic Plan No: 10059

REV: 8-14-13



235 Apollo Beach Blvd #124
Apollo Beach FL 33572
813-630-4222 Phone
813-651-3394 Fax

ASI COM